

# INTERNET REFERENCE GUIDE



Client: Astound  
Job #: AST169\_West\_WifiGuide-TenTrails  
Size: 5.5"W x 8.5"H  
Date: 07/1/25

Prepared By:  
**DELEONGROUP**  
718-967-2241  
Ken@DeLeonGroup.com

©2025 DELEON GROUP LLC. All rights reserved.

## WELCOME HOME

**Your internet service is installed and ready for a router.** You can provide your own router or rent one from Astound. See below for more information.

## HERE'S WHAT YOU NEED TO KNOW

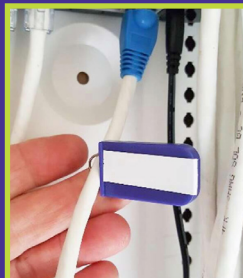
**You'll find the main feed in your smart panel,** located in your upstairs laundry room. The Astound connection has a label tag and a blue "boot" to identify it.



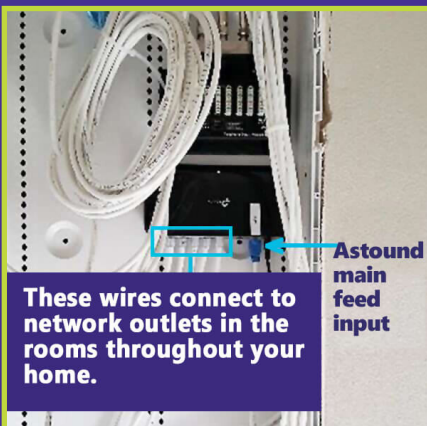
This is your  
smart panel



Inside your  
smart panel



This is your  
main feed



These wires connect to  
network outlets in the  
rooms throughout your  
home.

Astound  
main  
feed  
input

The main feed plugs into an input on the switch. From the switch, there are Ethernet cables that connect to wall jacks in several of your rooms, which should be labeled by the electrician.

# HOW TO CONNECT TO YOUR WIRELESS SERVICE (WIFI)

**You will need a wireless router to set up your WiFi service.** You can rent one from us or use your own. Rental includes full support and replacement if needed.

## RENT A WIRELESS ROUTER FROM ASTOUND

Contact us at **1.844.779.2834**

Or visit us online: [www.astound.com/ten-trails/contact-us/](http://www.astound.com/ten-trails/contact-us/)

## USE YOUR OWN WIRELESS ROUTER

You have **two options** if you choose to use your own wireless router.

### 1. Connect it in the smart panel

- Plug the Astound feed with the blue boot into your wireless router input
- If you would like to be able to use a hard-wired connection in other rooms, connect your router to the switch with another Ethernet cable

### 2. Set it up in one of your pre-wired rooms

- Ensure the Astound feed with the blue boot is plugged into the switch as shown on the previous page
- Select a pre-wired location that is connected to the switch
- Using an Ethernet cable, plug your router into the wall jack corresponding to that location

## MORE SUPPORT

### Register your account

In order to fully support your service and deliver an optimal customer experience, Astound requires some key information for your account. Please provide your information in our online form:

[www.astound.com/ten-trails/contact-us/](http://www.astound.com/ten-trails/contact-us/)

Help is available 24/7 from our support center: **1.844.779.2834**



Client: Astound

Job #: AST169\_West\_WifiGuide-TenTrails

Size: 5.5"W x 8.5"H

Date: 07/1/25

Prepared By:

**DELEONGROUP**

718-967-2241

[Ken@DeLeonGroup.com](mailto:Ken@DeLeonGroup.com)

©2025 DELEON GROUP LLC. All rights reserved.