

HDTV

Quick Start Guide

(No Contact or Tech Assisted)



This guide will assist you in connecting and setting up your HDTV.

If you requested no-contact installation, your installer will complete the work outside your home and will assist you over the phone. This installation guide is easy-to-use and will get you started. You and your installer will follow the step-by-step process together to get your video services connected.

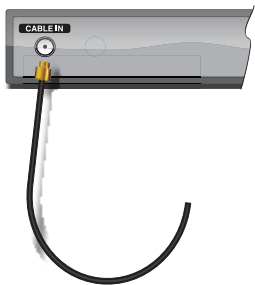
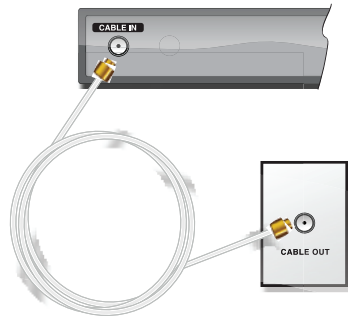
Your Technician's Name is: _____ and can be contacted at: _____

STEP 1

Connecting your converter box.
(A. Wall Outlet or B. Open Cable Wire)

A. Wall Outlet

Connect one end of the coaxial cable to the wall outlet and the other end to the "Cable In" (or "RF IN") connection on the back of the converter box.

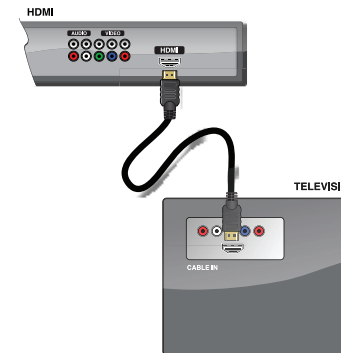


B. Open Cable Wire

(This wire could be coming out of the floorboard, window, etc)
Connect the open cable to the "Cable In" (or "RF IN") connection on the back of the converter box.

STEP 2

Connecting your Converter Box to TV
(HDMI or Component cabling)

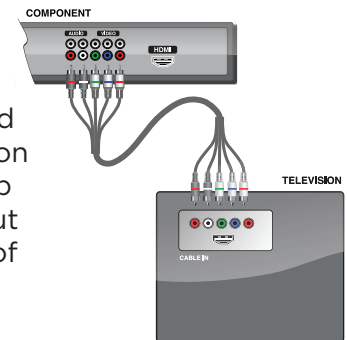


HDMI

Connect one end of the HDMI cable into the HDMI connection on the back of the converter box. Connect the other end of the HDMI cable into the HDMI connection on the back of your TV.

High Definition Component Cable

Audio: Connect the black tip with red band into the audio output connection marked "R" and connect the black tip with white band into the audio output connection marked "L" on the back of the converter box.



STEP 2 cont...

High Definition Component Cable

Video: Connect the remaining cables into the corresponding RGB (Red, Green, Blue) video output connections on the back of the converter box.

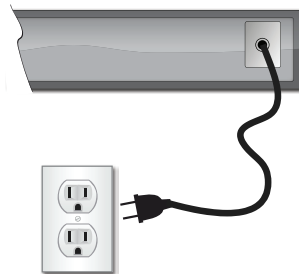
Connect the other end of the component cable as follows:

Audio: Connect the black tip with red band into the audio input connection marked “R” and connect the black tip with white band into the audio input connection marked “L” on the back of your TV.

Video: Connect the remaining cables on that end into the corresponding RGB (Red, Green, Blue) video input connections on the back of your TV.

STEP 3

Connect the power supply cord into the back of the converter box, then plug the other end into an electrical outlet. Ensure a wall light switch does not control the outlet. If it does, set the switch to the “ON” position.



STEP 4

Turn on the television with the TV remote. Press the “Input” or “Source” button. Depending on which cable you installed in Step 2, select the HDMI or Component video source on your TV.

STEP 5

Insert batteries into the remote control.

STEP 6

Press the **CBL** button on the remote. The power light on the converter box will illuminate.

Please Note: In order for your installation to be successful, you must install ALL converter boxes that are not yet connected. Follow the previous steps for the other converter boxes included in your order before continuing to the next step.

You are now ready to activate your converter box.

STEP 7

Locate your packing slip. Follow the instructions to ensure proper account setup and optimum service.

STEP 8

To utilize all the features of your remote control, please reference the included instruction sheet.

Congratulations! Enjoy the experience of HDTV.

Additional Resources:

If you need assistance after your installation, please don't hesitate to contact us at **1.800.427.8686** or at **astound.com/support**; our customer service agents are available 24 hours a day, 7 days a week.

Our customer pledge is simple:

we're committed to putting you first in everything we do.

- 24/7 customer service
- We will do what we say we're going to do
- 30-Day money back guarantee
- On-time Guarantee
- Easy to understand bill
- No mandatory contracts
- Service calls 7 days a week
- We'll make every effort to resolve your issue the first time

If you have any questions with your installation, please go to **astound.com/support** or call **1.800.427.8686**.

